



DOING
THE MOST
GOOD™

VICKSBURG SAWA NEWS



The Salvation Army Women's Auxiliary of Vicksburg, Mississippi

In This Issue

- [President's Message](#)
- [Meeting Theme: Come Let Us Adore Him](#)
- [Angel Tree News](#)
- [Senior Angel Reminder](#)
- [Affairs of the Heart](#)
- [Volunteers](#)
- [Thrift Store News](#)
- [Treasurer's Report](#)

Calendar of Events

Dec. 5 – Angel Tree Outlets at Vicksburg & Vicksburg Mall Angel Tree Close-Down – **Final day to turn in gifts**

Dec. 7 - SAWA Meeting (noon)
Membership Meeting & Potluck Luncheon (noon)

Dec. 10 – Angel Tree Distribution Day 2016

Jan. 4 - SAWA Meeting (noon)
Feb. 1 - SAWA Meeting (noon)

Feb. 26 - 28 – Affairs of the Heart
Mar. 7 - SAWA Meeting (noon)
Membership Meeting & Potluck Luncheon (noon)

Apr. 4 - SAWA Meeting (noon)



Contact Us

<http://vixsawa.weebly.com/news.html>

Or Email:

KamaceP@Andersontully.com or
trudyhames@att.net

President's Message

Hello Ladies,

I hope everyone had a wonderful Thanksgiving filled with friends, family and lots of food!

The Christmas season has begun. And we at The Salvation Army are in full swing with Angel Tree and Red Kettle. The Angel tree is serving over 225 families this year. And the monies from the Red Kettle are used for the operation of the Salvation Army. Your help with these two endeavors is greatly appreciated.

As we celebrate this holiday with friends, families, parties and shopping, be sure to take time daily to reflect the true meaning of Christmas, the birth of our Lord, Jesus Christ. We can all be like Him and give the gift that most pleases Him – the gift of love. We can do this by helping others through kindness by visiting someone or including them in a family gathering or volunteering at a charity. The gift of time is one of the most precious gifts that you can give.

I hope each and every one of you has a very Merry Christmas and Happy New Year.

I hope to see you at the potluck with a friend.

Kamace Priest



December Meeting Theme: Come Let Us Adore Him



We appreciate our meeting hostesses for December with a "Come Let Us Adore Him" theme: Samestine Adams, Linda Cary, Wanda Clark, and Trudy James. This is our quarterly membership covered dish luncheon (and Christmas Party), so please bring a friend or two and a dish to share with everyone.

Bible verse – "And she shall bring forth a son, and thou shalt call his name JESUS: for he shall save his people from their sins." 1 Matthew 1:21.

Angel Tree News

Saturday, Dec. 5 – Angel Tree gifts due back to mall

Thursday, Dec. 10 – Angel Tree distribution day

Those that volunteered for distribution center organization will be sent a text as to when the center will be open for gift organizing. **Distribution day training** will be in the Christmas distribution center on **Saturday, December 5th at 11 AM**; those that signed up will be contacted and informed of the training.

We have less than 5 angels in need of adoption!

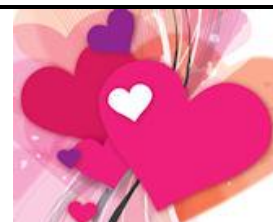


Senior Angel Reminder

Please bring one of these items to the December meeting for our Senior angels, if possible: socks, slippers, body wash and sweats. Jo Beth thanks you for your support.

Affairs of the Heart – Entertainers Being Scouted

Jo Beth Britt is scouting entertainment for Affairs of the Heart. If you know of anyone who would like to perform, please tell Jo Beth. Affairs dates are the last Friday/Saturday and Sunday of February (Feb. 26-28).



2013 - 2015 SAWA Officers and Committee Chairmen

Kamace Priest President (2013-15)

Trudy James ... 1st Vice Pres.
(Membership Chair)

Martha Roberts ... 2nd Vice Pres.
(Publicity Chair)

Carrie Callender Secretary

Barbara Cashman – Treasurer (2014-15)

Mary Barnes - Chaplain

Carrie Callender Nominating
Committee Chair

Patricia Wines..... Finance Committee
Chair (2013-15)

Jo Beth BrittAffairs of the Heart;
Senior Angels

Judy Monroe – 2014-15 - Soup &
Sandwich Chairmen; Jacque Henley
and Pat Wines, Co-Chairmen

2013-15 Silent Auction Co-Chairmen:
Tina Grau & Martha Roberts

Cpt I B/Kamace Priest – Christmas
Angel Tree Coordinator/Helper

Louise Derrington – 2015 Vicksburg
Mall Angel Tree Coordinator

Harriet Gray – Hospitality Com. Chair



Tina Grau Newsletter

Salvation Army Office:

Mon – Fri. 9:00 – noon; 1:00 - 4:00

(office closed daily from noon - 1:00 for lunch)

Family Store (2600 Clay St.)

Hours:

Mon., Wed. – Sat. 10:00 – 4:30

Help always needed here!

Phone 601-456-4092 for pickups.



Remind your neighbors that the Thrift Store NEEDS furniture, clothing, linens, household items (including working computers, and electronics) & rags!



Office and Family Store Volunteers

Thanks to all of our office volunteers for November 2015: Gloria Naylor, Patricia Wright and any others who volunteered their time. An Office Volunteer Coordinator is needed; if you can fill this position, please contact Kamace Priest at KamaceP@Andersontully.com or call 601-218-8108.

Thank you to the following Auxiliary members who volunteered in the Family Store during August: Jo Ann Burke, Rosemary Fairchild, and Wanda Clark. If you volunteered and are not listed, WE APPRECIATE YOUR HELP TOO! More help is always needed at the Family Store at 2600 Clay Street.

Family Store News – Your Donations Make a Difference in the Lives of Others



The SA Family Store needs your overflow! With Christmas upon us, now is a great time to clean out and donate those unneeded items so that others may benefit. Furniture and household items are needed as they sell especially fast. Dishes, kitchen accessories, and linens also sell quickly. Clothing, purses, shoes and bedding are always in demand. Usable computers, televisions, and electronics are welcome. NOTE: Garments can be in ANY condition because income is also derived from rag sales. (The value of your donation is tax deductible and a receipt will be provided by store staff.) Be sure to tell your friends and neighbors! **Phone number for pickups is 601-456-4092 – a new truck is available for pick-ups!** (Volunteer help always needed in the new Family Store at 2600 Clay Street – come any day except Tuesday between 10:00 and 3:00.). Drop-off donations can be made by driving around store rear and honking horn. A donation box is also located in front of the store on the left for after-hour donations.

Family Store hours are 10:00 – 4:30, Monday and Wednesday – Saturday. Closed Tuesday and Sunday.

PLEASE NOTE: [The Salvation Army Family Store Vicksburg](#) has a Facebook page that is updated on an almost daily basis. Please like and share it with your friends.

Treasurer's Report from Barbara Cashman

SALVATION ARMY WOMEN'S AUXILIARY TREASURER'S REPORT

November 2015

Balance last statement (11-30-2015)		\$30,420.40
November Activity		
Deposits		
11/02	Soup and Sandwich ticket sales	80.00
11/03	\$165 silent auction 40 donation 280 Soup and Sandwich tickets	485.00
	Total deposits	\$ 565.00
Withdrawals		
None		
Balance this statement (11/30/2015)		\$30,985.40
Remaining Earmarked Funds		
Social Services		7800.00
Youth Program		3600.00
Total		11,400.00
Funds Available		7905.10



Join Us

Members are the lifeblood of any organization.

Who do you know that would enjoy being a member of SAWA, making new friends, and serving the needs of others?

- **Send them a newsletter**
- **Invite them to a meeting**
- **Offer to pick them up on meeting day**

No Mail-Out Newsletter in January!

There will be a brief January email newsletter, but no mail-out version. See you at the Monday, January 4 meeting. Merry Christmas and Happy New Year!



The Salvation Army

PO Box 1166

Vicksburg, MS 39182-1166